

WELCOME TO OUR EXHIBITION

Thank you for visiting our exhibition for the proposed Correen Hills wind farm.

Force 9 Energy and EDF Renewables are committed to giving local people the opportunity to feed back their views and suggestions directly to our project team, at every stage of the development process.

Today's exhibition provides an early opportunity for you to hear about our initial proposals for the wind farm and for us to listen to your views and take these into account as we continue to develop the project.

Following this first public exhibition, we will review the feedback received, and in conjunction with ongoing discussions with key stakeholders and consultees, consider the design of the project carefully. We intend to host further exhibitions in early 2024 to illustrate where feedback received has shaped the project design.



FORCE 9 ENERGY



Force 9 Energy Partners LLP is a successful UK wind farm developer committed to delivering high quality renewable energy projects in the UK.

We are an experienced developer and choose potential sites very carefully. We have successfully taken nine wind farm projects through the planning process. Six of these wind farms are now fully operational.

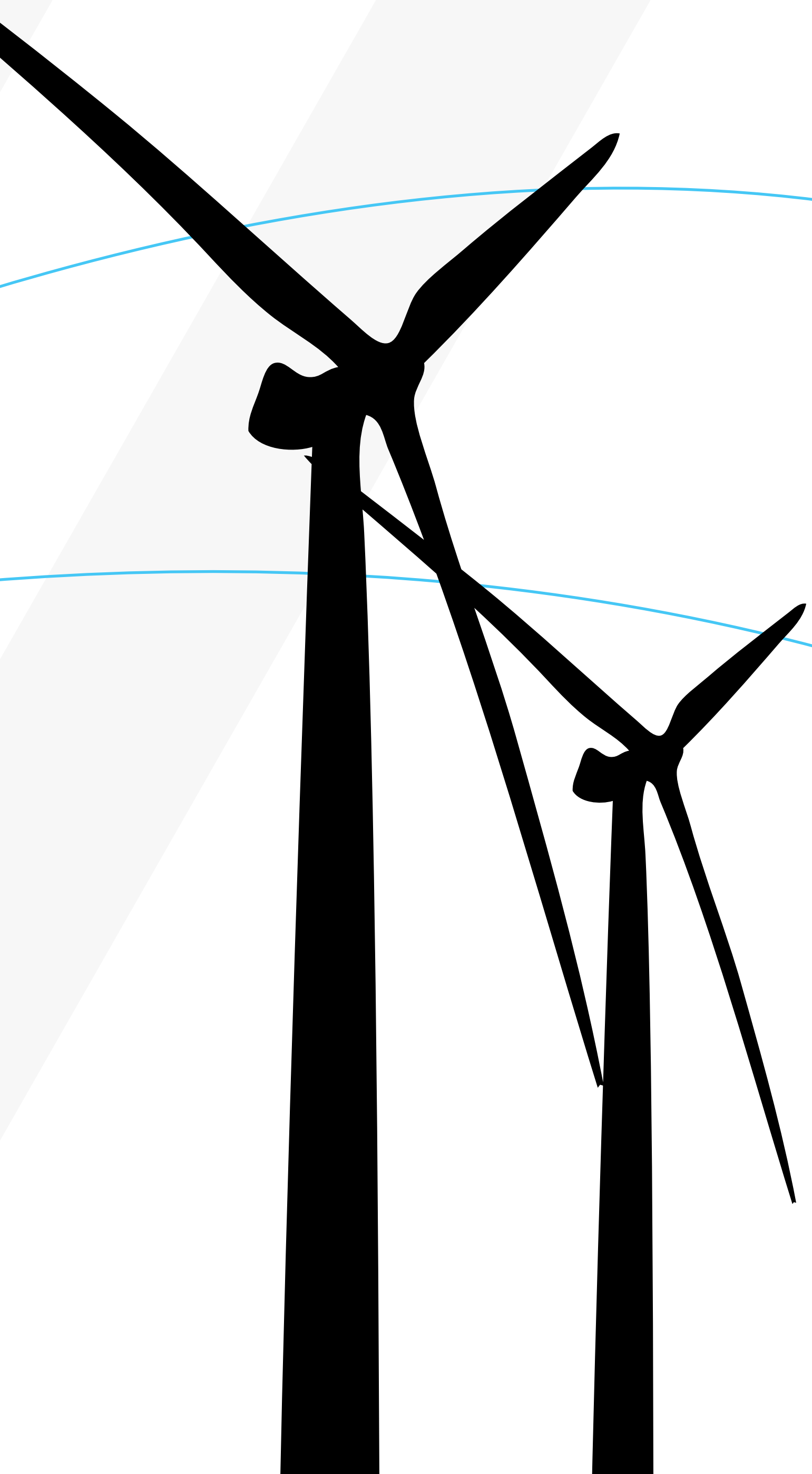
Our operational and consented projects amount to a total installed capacity of over 500MW, and we continue to seek new opportunities for sustainable wind farm development.

EDF RENEWABLES UK



Force 9 Energy's Development Partner, EDF Renewables UK, is one of the UK's leading renewable energy companies. It develops, builds and operates generation projects with a focus on onshore and offshore wind as well as solar and battery storage technology.

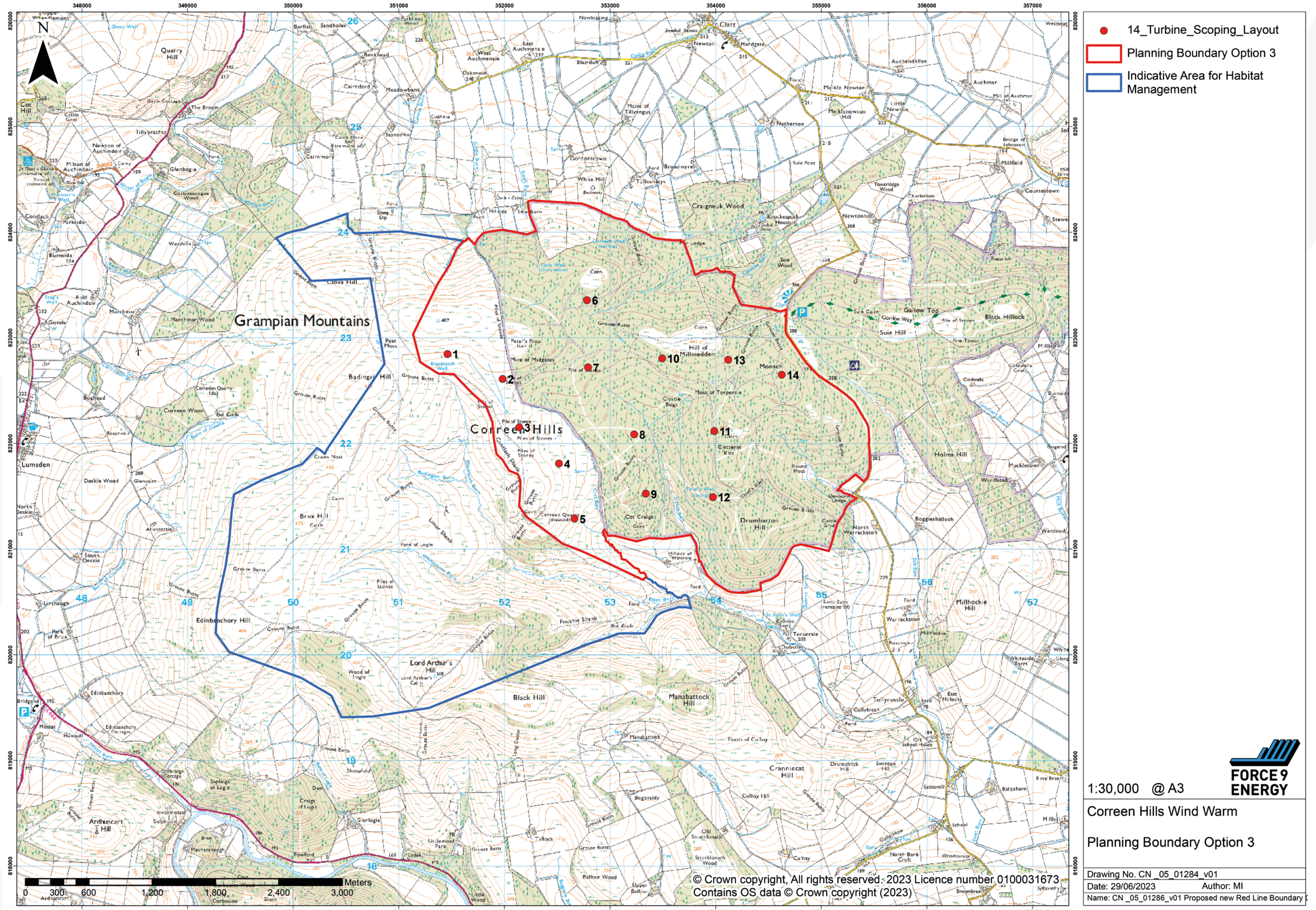
EDF Renewables UK currently operates 34 onshore wind farms (10 in Scotland), two offshore wind farms and two battery energy storage facilities in the UK, as well as three solar farms in Ireland, and has over 14GW of renewables projects in planning and development.



Please note, all graphics, wireframes and photomontages in this exhibition are for representational purposes only.

Please note that comments made will be collected and used by Force 9 Energy, not the determining authority. Representations to the determining authority will be possible following the submission of a planning application.

www.correenhillswindfarm.co.uk



Indicative turbine layout

CORREEN HILLS WIND FARM

The proposed wind farm site is located at land centred approximately 7km north west of Alford. The site location shown outlined in red on the map above.

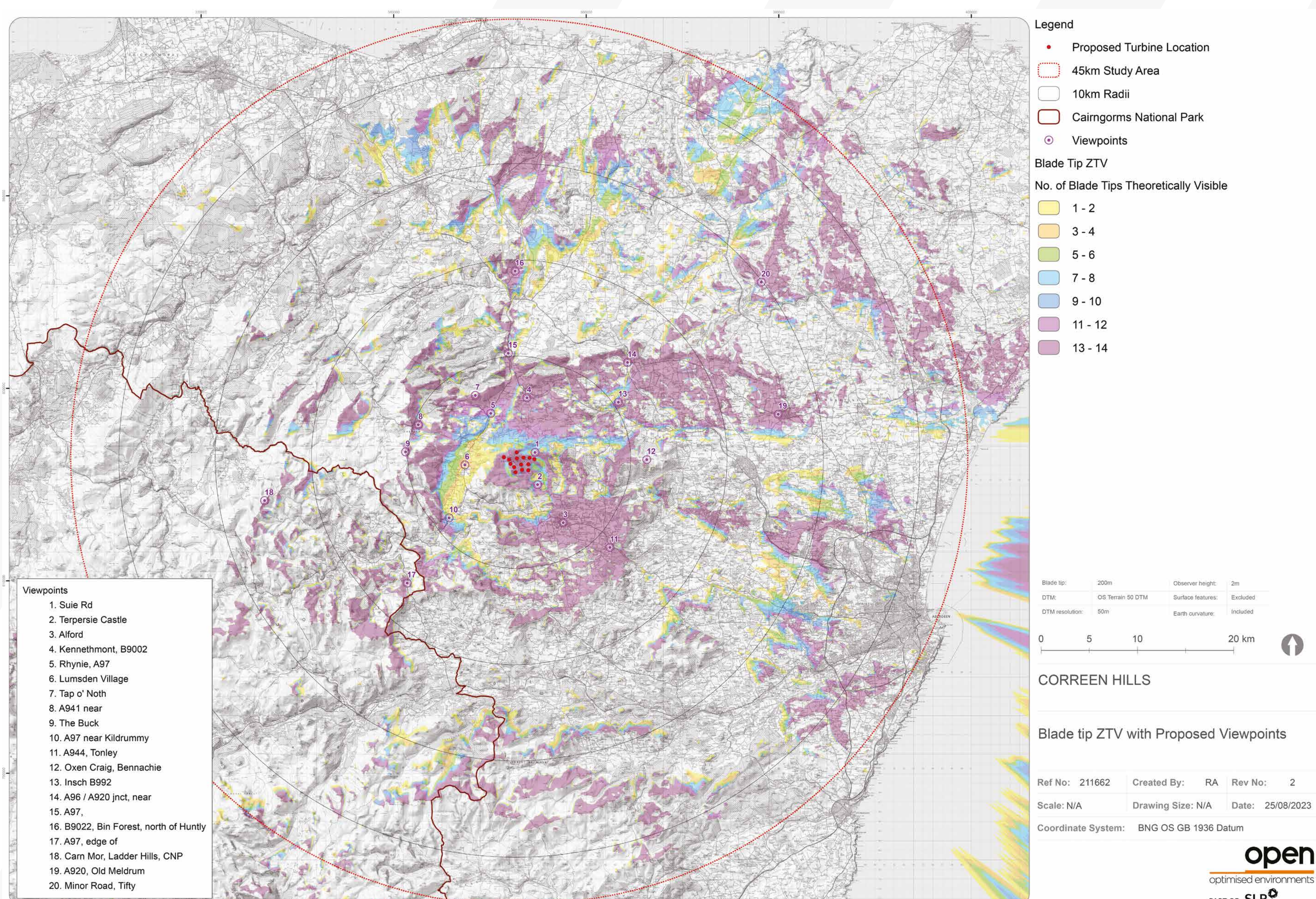
Our initial assessments for the site suggest it could accommodate up to 14 turbines, with an output capacity of up to 100MW with an additional 50MW battery storage. As the output capacity would be over 50MW, the Scottish Government's Energy Consents Unit (ECU) would determine the application for consent, with Aberdeenshire Council a statutory consultee.

In October 2023 we submitted a Scoping Request to the ECU. The Scoping Request seeks consultee feedback on the development proposals, the environmental topics that will be addressed in the Environmental Impact Assessment (EIA) which will accompany any future application for the development and the methodologies proposed to undertake these assessments.

Please note, all graphics, wireframes and photomontages in this exhibition are for representational purposes only.

Please note that comments made will be collected and used by Force 9 Energy, not the determining authority. Representations to the determining authority will be possible following the submission of a planning application.

www.correenhillswindfarm.co.uk



Indicative Zone of Theoretical Visibility

ASSESSING VISUAL IMPACT

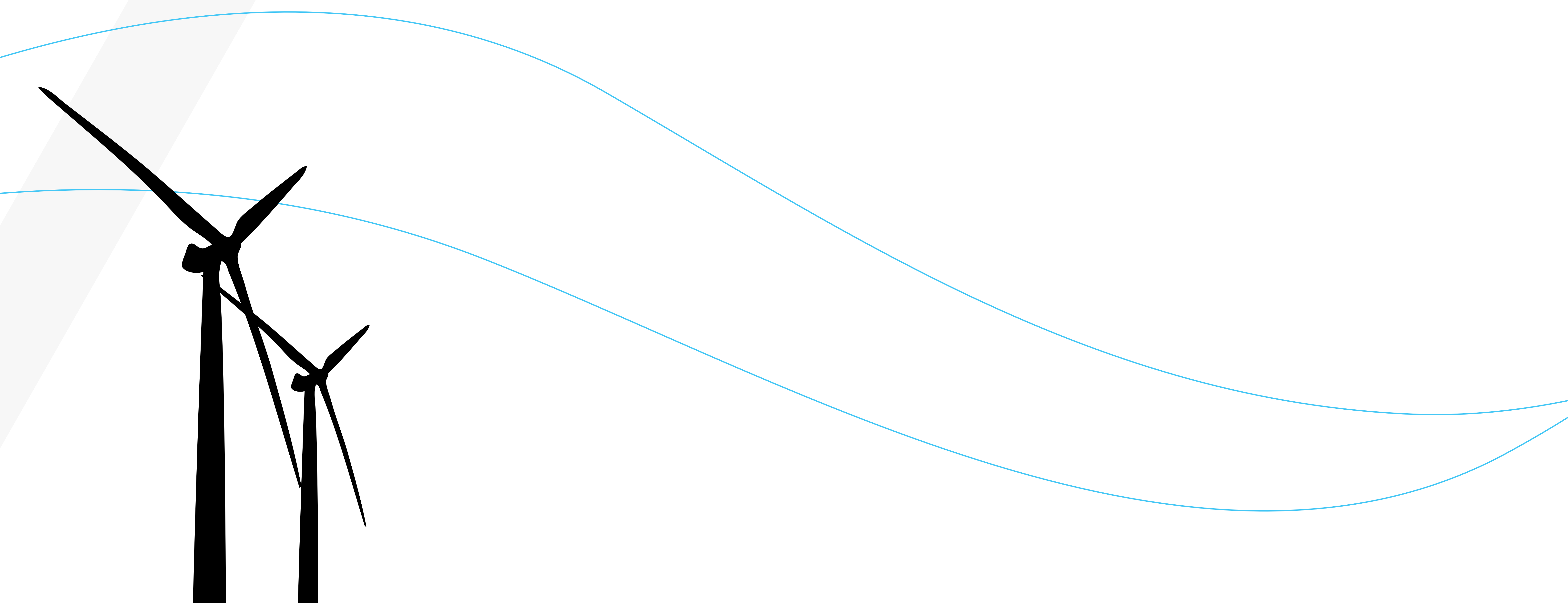
To help identify which landscape and visual resources may be affected by the proposed development, a computer-modelled zone of theoretical visibility (ZTV) plan has been produced, as shown above.

This illustrates the maximum theoretical area of visibility of the proposed wind farm based on topography.

It should be noted that although ZTVs indicate theoretical visibility, the actual visibility of the proposed wind farm can be very different. ZTVs are based on Ordnance Survey digital information of landform (i.e. hills, valleys and mountains in the area). They do not take into consideration features such as trees, shrubs, buildings or any other physical structures or vegetation.

A more accurate portrayal of the actual visual impact of the development is shown through the production and analysis of wirelines and photomontages, together with the 3-D video model which is available to view at this exhibition.

If you wish to discuss or view the wind farm from a particular location please do not hesitate to speak to a member of the project team and we will be happy to assist.



Please note, all graphics, wireframes and photomontages in this exhibition are for representational purposes only.

Please note that comments made will be collected and used by Force 9 Energy, not the determining authority. Representations to the determining authority will be possible following the submission of a planning application.

ASSESSING PROJECT IMPACTS

We have commissioned an Environmental Impact Assessment (EIA) which will consider the potential impacts of the wind farm on a wide range of aspects of the environment and help inform the project design.

The EIA will accompany the application for consent for the wind farm and its scope will be agreed with the Scottish Government and its consultees (e.g. Nature Scot, SEPA and Historic Environment Scotland). The EIA work is being undertaken by independent experts who are professionally qualified in their various fields.

The potential impacts, which will be examined as part of the EIA for Correen Hills wind farm, include:

- **Landscape and Visual**

A comprehensive assessment is being undertaken to examine the impacts of the proposals on the character and appearance of the landscape, views from residential properties and recreational areas, as well as public rights of way and transport routes. We are also carefully considering cumulative landscape and visual effects. Areas within 45km of the proposed development have been taken into account in scoping its visual effects and the landscape context.

- **Noise**

Strict guidelines exist concerning noise emissions from wind turbines and the final design of the wind farm will take full account of these guidelines. The potential noise effects to be considered include construction traffic noise along the public road, construction plant on the wind farm site, as well as noise from the wind turbines and substation once these are in operation.

- **Ecology and Ornithology**

Surveys have been undertaken to establish the bird and animal species which use the habitats on and around the site. The effects of the wind farm on these species and the habitats that they use will be considered in detail and a habitat management plan to help enhance the environment for these species and generate biodiversity net gain from the proposed development will be created.

- **Geology, Hydrology, Hydrogeology and Peat**

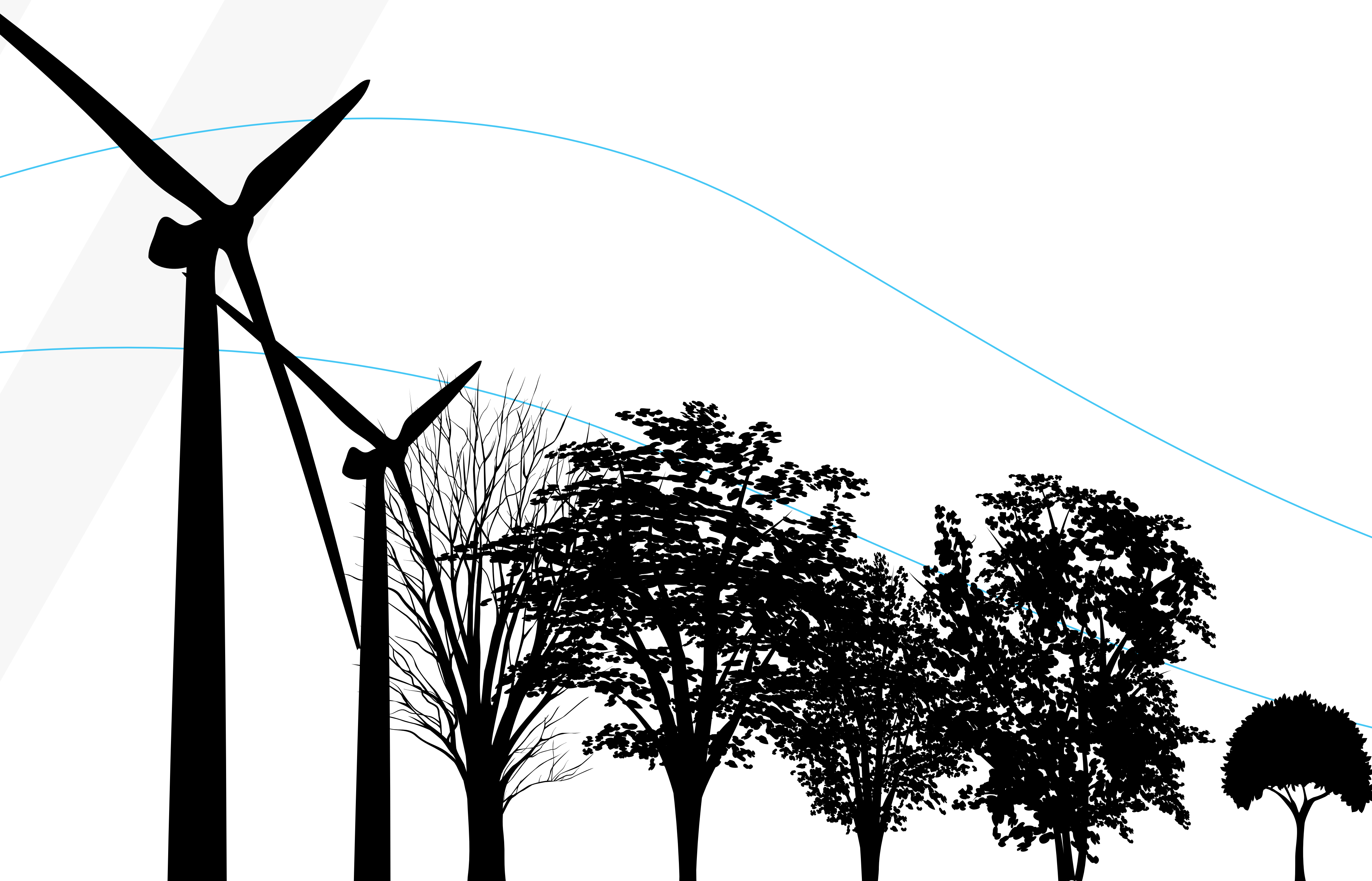
Surveys of the site have been undertaken to establish where sensitive water features are located, including areas of deep peat etc. Our turbines and access roads will avoid such areas.

- **Archaeological and Cultural Heritage**

Archaeological and cultural heritage assets on and close to the site will be visited to establish what effect (if any) the wind farm will have on them, or their setting.

- **Traffic and Transport**

Consultants will undertake a traffic survey in the area to establish what effect the introduction of wind farm construction traffic would have upon the local road network. Proposals will then be set out as to how best to minimise disruption for local people, particularly at busy times of the day.



Please note, all graphics, wireframes and photomontages in this exhibition are for representational purposes only.

Please note that comments made will be collected and used by Force 9 Energy, not the determining authority. Representations to the determining authority will be possible following the submission of a planning application.

www.correenhillswindfarm.co.uk

POTENTIAL BENEFITS OF CORREEN HILLS WIND FARM

Opportunities for Local Businesses

Aside from its wider socio-economic and environmental benefits wind power is compatible with other land uses and can provide a boost for rural economic diversification.

Force 9 Energy and EDF Renewables UK are committed to giving local businesses every possible opportunity to share in the financial and employment benefits of the construction and operation of Correen Hills wind farm. If constructed, Correen Hills will offer opportunities for local businesses such as accommodation providers, hire companies, fencing contractors, tradespeople and machinery plant owners. If you represent a local business, please contact us and we will register your interest and keep you informed about valuable opportunities for local businesses connected with the wind farm.

By way of example, for EDF Renewables UK's Fallago Ring wind farm, near Duns in the Scottish Borders, strong relationships were forged with the local supply chain during the development phase. This enabled local businesses to win contracts worth £10m during the design and construction phase. This included suppliers and contractors supplying transport and plant, as well as support and accommodation services.

Community Benefit

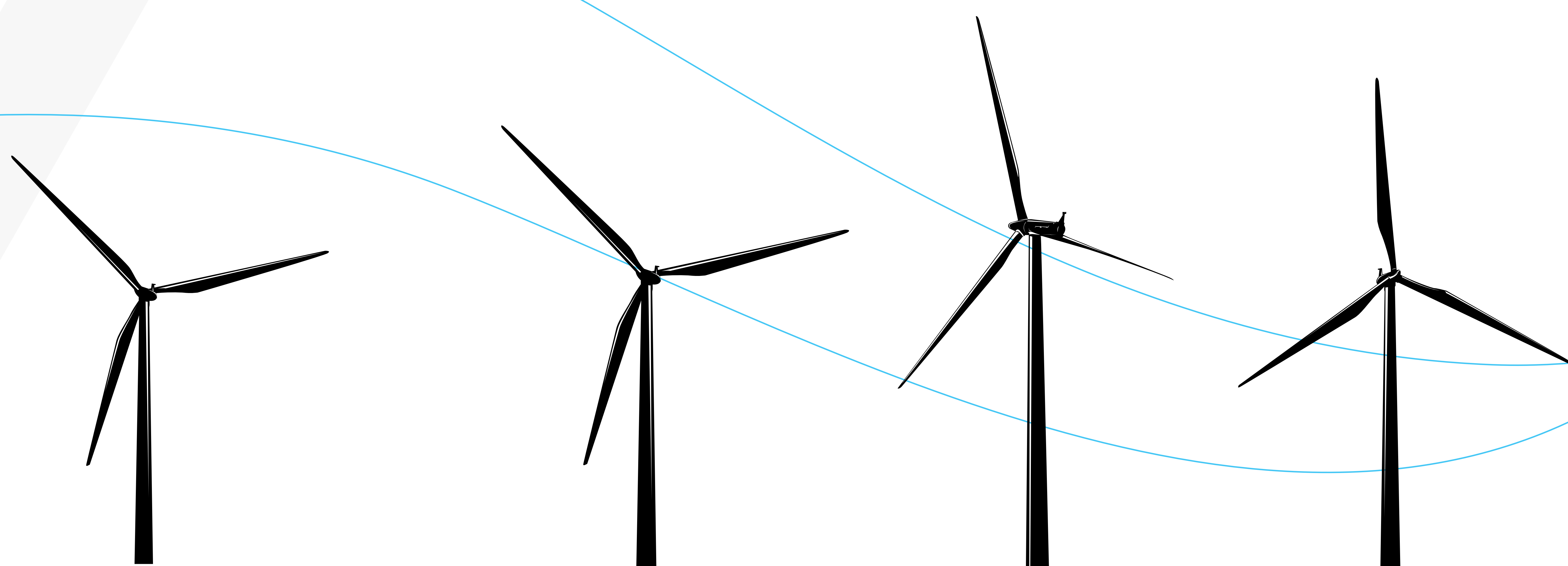
Force 9's development partner, EDF Renewables UK, is committed to paying community benefit at the Scottish Government recommended rate: currently at a value equivalent to £5,000 per mega watt of installed capacity, for every year of operation (anticipated to be 30 years) to help fund community projects. For illustrative purposes, if a 100 MW wind farm is constructed, this would be worth £500k per year (index linked) for local communities, for each year of operation – a total of up to £15million over the project's lifetime.

The Community Benefit Fund would be administered by a third party in which a local Community Liaison Group would be formed to decide how the monies are spent. The funds would be available for a variety of local good causes and, subject to certain guidelines, it would be up to the local community as to how best to distribute the available funds.

Shared Ownership

EDF Renewables UK and Force 9 Energy are providing the opportunity for communities in the area to consider a share in the ownership of the Correen Hills wind farm. For more information please contact us using the details provided.

Force 9 and EDF Renewables UK will liaise closely with interested community groups on this opportunity. Community ownership has the potential to fund significant long term 'legacy' projects, galvanise communities and build their capacity to grow and develop.



Please note, all graphics, wireframes and photomontages in this exhibition are for representational purposes only.

Please note that comments made will be collected and used by Force 9 Energy, not the determining authority. Representations to the determining authority will be possible following the submission of a planning application.

www.correenhillswindfarm.co.uk

NEXT STEPS

We are currently gathering information regarding the proposed wind farm, and are engaging in discussions with community councils, local residents and local businesses, and these conversations will help inform and shape the design of the project.

Please take the time to complete the feedback forms provided, to let us know your views on the proposals and to provide any comments that you may have. As the design evolves, and responds to key constraints and issues raised, we intend to hold a further round of consultation early next year to give you a further opportunity to give us your thoughts about the emerging proposals.

If you have any further questions regarding any aspect of the proposals, please contact us via the details below:

Address Correen Hills Wind Farm Consultation, c/o Cavendish, 80 George Street,
Edinburgh, EH2 3BU
Telephone 0131 376 0893
Email info@correenhillswindfarm.co.uk

TIMELINE



Please note, all graphics, wireframes and photomontages in this exhibition are for representational purposes only.

Please note that comments made will be collected and used by Force 9 Energy, not the determining authority. Representations to the determining authority will be possible following the submission of a planning application.

www.correenhillswindfarm.co.uk