



Existing view from Alford



Photomontage view from Alford

OS reference:	358344 E 815726 N	Horizontal field of view:	53.5° (planar projection)	Camera:	Canon EOS 5D Mark II
Eye level:	143.41 m AOD	Principal distance:	812.5 mm	Lens:	EF50mm f/1.4 USM
Direction of view:	323°	Paper size:	841 x 594 mm (A1)	Camera height:	1.5 m AGL
Nearest turbine:	7.235 km	Correct printed image size:	820 x 260 mm	Date and time:	14/08/2023, 10:46

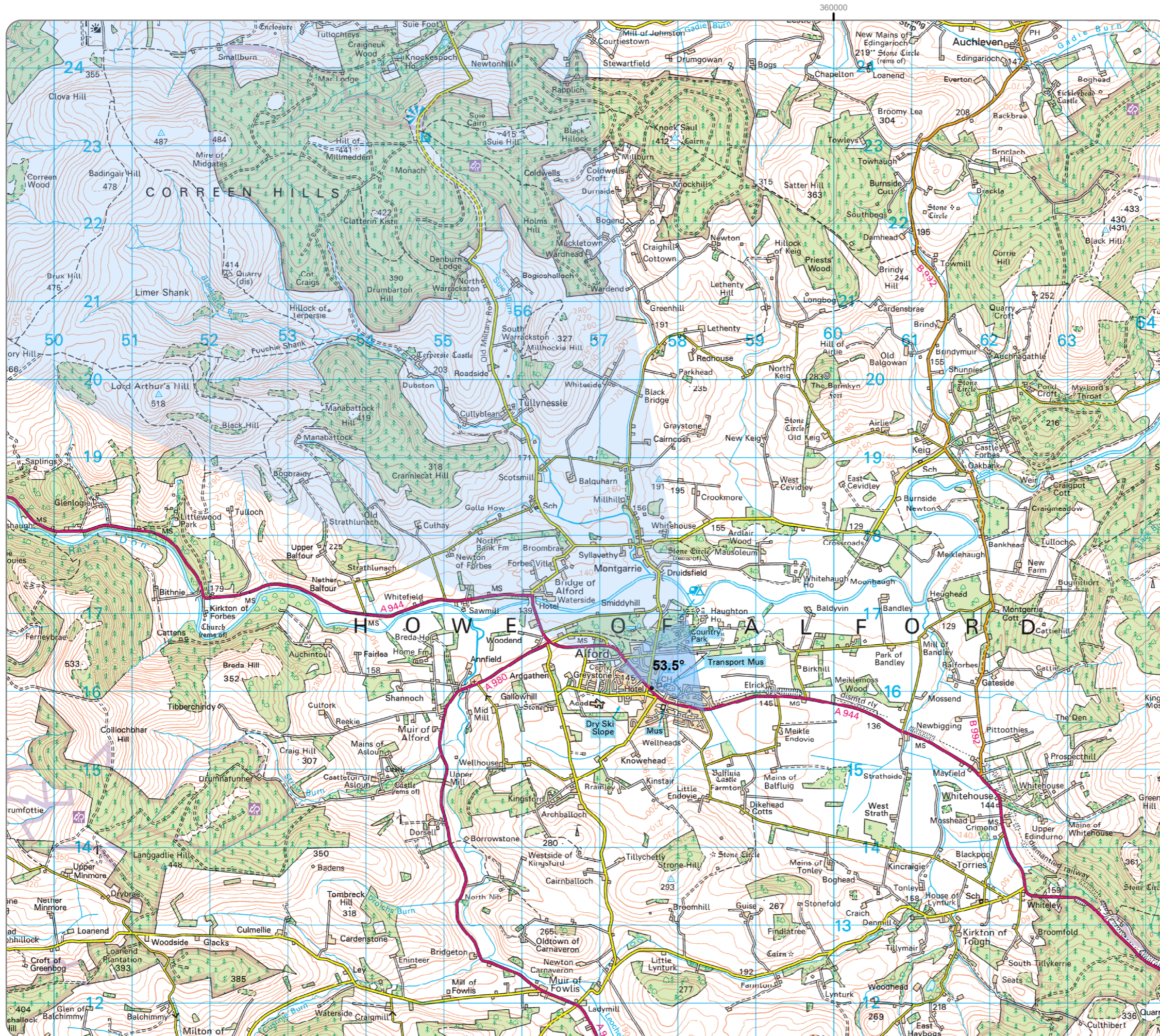


Existing view from Kennethmount



Photomontage view from Kennethmount

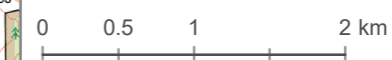
OS reference: 354394 E 828922 N	Horizontal field of view: 53.5° (planar projection)	Camera: Canon EOS 5D Mark II
Eye level: 183.4 m AOD	Principal distance: 812.5 mm	Lens: EF50mm f/1.4 USM
Direction of view: 192°	Paper size: 841 x 594 mm (A1)	Camera height: 1.5 m AGL
Nearest turbine: 5.795 km	Correct printed image size: 820 x 260 mm	Date and time: 14/08/2023, 08:54



Legend
 53.5° Horizontal Field of View

Direction of view: 323°
 Nearest turbine: 7.235 km

OS OpenData
 Contains OS data © Crown copyright and database right (2023).



CORREEN HILLS

Viewpoint 3: Alford

Ref No: 211662	Created By: RA	Rev No: 2
Scale: 1:50,000	Drawing Size: A3	Date: 18/09/2023
Coordinate System: BNG OS GB 1936 Datum		

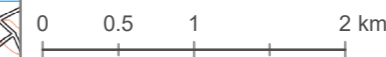




Legend
 53.5° Horizontal Field of View

Direction of view: 192°
 Nearest turbine: 5.795 km

OS OpenData
 Contains OS data © Crown copyright and database right (2023).

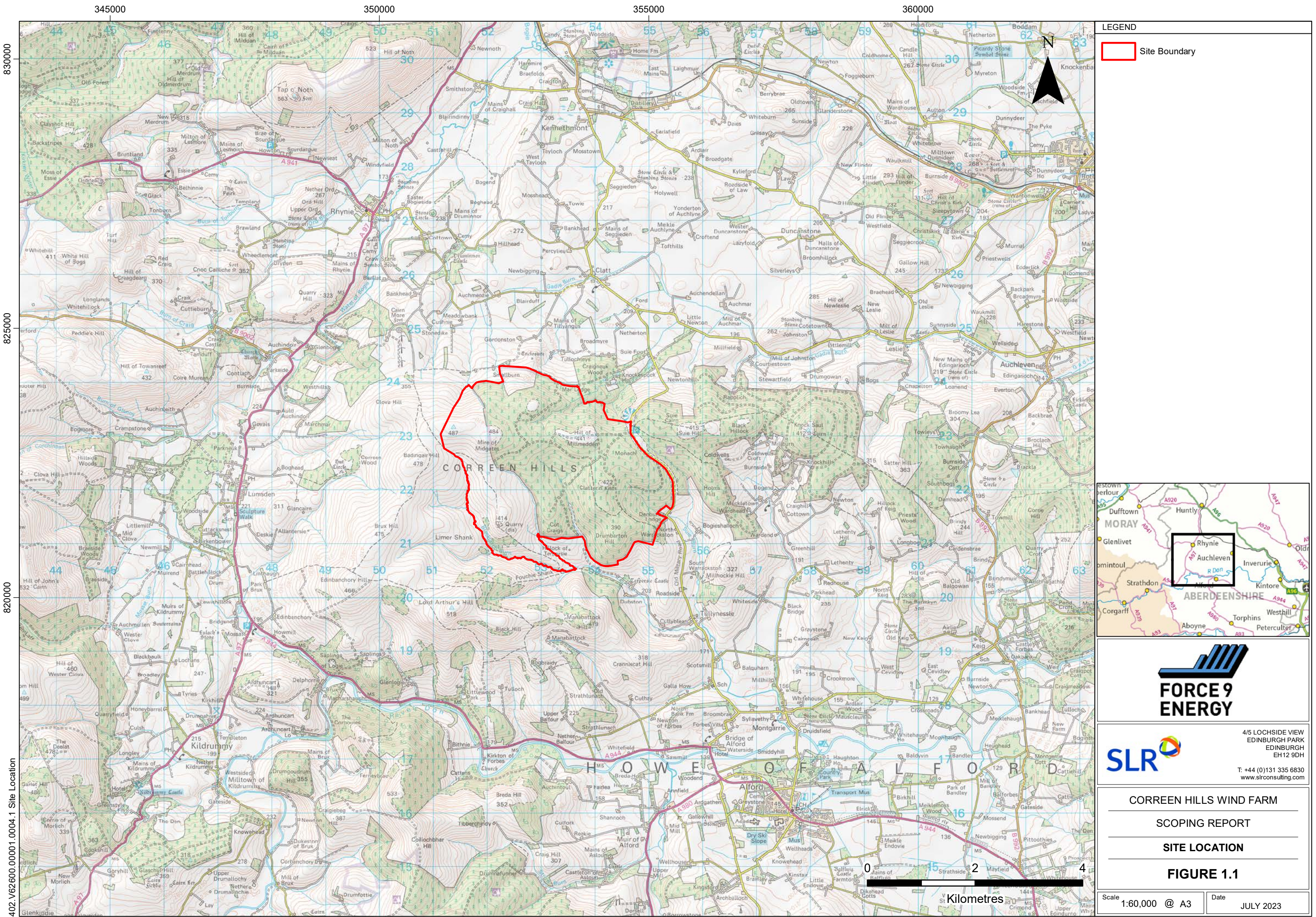


CORREEN HILLS


Viewpoint 4: Kennethmount

Ref No: 211662	Created By: RA	Rev No: 2
Scale: 1:50,000	Drawing Size: A3	Date: 18/09/2023
Coordinate System: BNG OS GB 1936 Datum		





LEGEND

 Site Boundary




FORCE 9 ENERGY



4/5 LOCHSIDE VIEW
EDINBURGH PARK
EDINBURGH
EH12 9DH

T: +44 (0)131 335 6830
www.slrconsulting.com

CORREEN HILLS WIND FARM

SCOPING REPORT

SITE LOCATION

FIGURE 1.1

Scale 1:60,000 @ A3 Date JULY 2023

402.V62600.00001.0004.1 Site Location